

Which Spelling Is It?

Advanced Code

Word Cards - Multisyllable Words
Phoneme: /or/ - Spellings: al, ore

al
walking

ore
explore

ore
restor

Spelling Cards
Phoneme: /s/ - Spellings: s, ss, st, c, ce, se, sc

s

Phoneme: /er/

Single-syllable words

Word Cards - Single-Syllable Words
Phoneme: /ee/ - Spelling: ea

ea
leaf

ea
lean

ea
meal

ea
mean

ea
pea

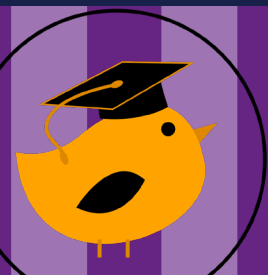
ea
peach

ea
please

ea
read

ea
seal

Save TIME
and
EFFORT!



TOP NOTCH
TEACHING

Progression Of Phonemes

The table below shows the progression of phonemes and their graphemes. You can use the game in order or pick and choose based on your weekly lessons and students' abilities.

Phoneme	Graphemes
/k/	c, k, ck
/l/	l, ll, le
/ch/	ch, tch
/ae/	a, ai, ay, a-e, ea
/ee/	e, ea, y, ee, ey, ie
/oe/	o, oa, ow, o-e, oe
/er/	er, ir, or, ur, ear
/e/	e, ea, ai
/ow/	ou, ow
m/oo/n	oo, ow, u, u-e, o, ou, u
/ie/	ie, y, ie, igh
b/oo/k	oo, u, oul
/u/	u, o, ou, o
/s/	s, ss, st, c, ce, se, sc
/l/	l, ll, al, el, il, le, ol
/or/	or, aw, a, ar, au, al, ore
/ir/	air, are, ear, ere, eir, ayer, ayor
/ue/	ue, ew, u, u-e
/oy/	oi, oy
/ar/	ar, a, al, au



Instructions

Resources

- Copies of the spelling cards; and
- Copies of the word cards.

Steps

1. This game is suitable for 2 - 6 players.
2. Print the spelling cards and word cards on thick cardstock and cut out.
3. Place each spelling card face up in the middle of the group of students.
4. Shuffle the word cards and place them in the middle face down.
5. Select a player to begin.
6. The student to the left of the player picks up one of the word cards. They read the word to the player.
7. The player must tap the spelling card that shows the way we spell the focus sound in the word. For example, the word is 'blue.' The player would then tap the spelling card 'ue' because the way we spell the /oo/ in blue is 'ue'.
8. The student then shows the player the word card. If the player tapped the correct spelling card, they get to keep the card. If they touched the incorrect spelling card, then the card goes to the bottom of the pile of word cards.
9. Players take it in turns around the circle to tap the correct spelling.
10. The game ends when the reading cards run out, or the designated time is up.
11. The student with the most number of word cards is the winner.



Phoneme m/oo/n

Single-syllable words

oo	ew	ue	u-e	o	ou	u
bloom	blew	blue	brute	do	mouth	flu
boost	brew	clue	chute	into	chup	ruth
broom	chew	glue	crude	to	grou	
droop	crew	rue	fluke		so	
food	drew	sue	flute		wound	
fool	flew	true	June		you	
gloom	grew		plu		youth	
groom	screw		prun			
hoop	shrewd		rude			
loom						
moon						
noon						
proof						
room						
scoop						
spoon						
touch						
zoom						



Spelling Cards

Phoneme: m/oo/n - Spellings: oo, ew, ue, u-e, o, ou, u

oo

ew

ue

Copyright © Top Notch Teaching

Copyright © Top Notch Teaching

Copyright © Top Notch Teaching

u-e

o

ou

Copyright © Top Notch Teaching

Copyright © Top Notch Teaching

Copyright © Top Notch Teaching

u

Copyright © Top Notch Teaching

Word Cards - Single-Syllable Words
Phoneme: m/oo/n - Spelling: oo

oo
bloom

Copyright © Top Notch Teaching

oo
boost

Copyright © Top Notch Teaching

oo
broom

Copyright © Top Notch Teaching

oo
droop

Copyright © Top Notch Teaching

oo
food

Copyright © Top Notch Teaching

oo
fool

Copyright © Top Notch Teaching

oo
gloom

Copyright © Top Notch Teaching

oo
groom

Copyright © Top Notch Teaching

oo
hoop

Copyright © Top Notch Teaching

Word Cards - Single-Syllable Words
Phoneme: m/oo/n - Spelling: oo

oo
loom

Copyright © Top Notch Teaching

oo
moon

Copyright © Top Notch Teaching

oo
noon

Copyright © Top Notch Teaching

oo
proof

Copyright © Top Notch Teaching

oo
room

Copyright © Top Notch Teaching

oo
scoop

Copyright © Top Notch Teaching

oo
spoon

Copyright © Top Notch Teaching

oo
tooth

Copyright © Top Notch Teaching

oo
zoom

Copyright © Top Notch Teaching

Word Cards - Single-Syllable Words
Phoneme: m/oo/n - Spelling: ew

ew

blew

Copyright © Top Notch Teaching

ew

brew

Copyright © Top Notch Teaching

ew

chew

Copyright © Top Notch Teaching

ew

crew

Copyright © Top Notch Teaching

ew

dew

Copyright © Top Notch Teaching

ew

flew

Copyright © Top Notch Teaching

ew

grew

Copyright © Top Notch Teaching

ew

screw

Copyright © Top Notch Teaching

ew

shrewd

Copyright © Top Notch Teaching

Phoneme m/oo/n

Multisyllabic words

oo	ew	ue	u-e	o	ou	u
blooper	brewed	bluebell	include	lasso	common	fluent
boosted	brewing	bluebird	intrude	moving	acoustics	fluid
gloomy	cashew	construe	salute	today	crouton	gluten
groovy	chewed	fondue	absolute	tomorrow		ruby
igloo	chewing	glueing	dilute			ruler
looming	Lewis	untrue	pollute			scuba
loosen	outgrew		resolute			super
moody	screwdriver					
mushroom	unscrew					
noodles						
poodle						
rooster						
scooter						
shampoo						
shooting						
sneaker						
spooky						
zooming						



Word Cards - Multisyllabic Words

Phoneme: m/oo/n - Spelling: oo

oo

blooper

Copyright © Top Notch Teaching

oo

boosted

Copyright © Top Notch Teaching

oo

gloom

Copyright © Top Notch Teaching

oo

groovy

Copyright © Top Notch Teaching

oo

ignoo

Copyright © Top Notch Teaching

oo

looming

Copyright © Top Notch Teaching

oo

loosen

Copyright © Top Notch Teaching

oo

moody

Copyright © Top Notch Teaching

oo

mushroom

Copyright © Top Notch Teaching

Word Cards - Multisyllabic Words

Phoneme: m/oo/n - Spelling: oo

oo
noodles

Copyright © Top Notch Teaching

oo
poodle

Copyright © Top Notch Teaching

oo
rooster

Copyright © Top Notch Teaching

oo
scooter

Copyright © Top Notch Teaching

oo
shampoo

Copyright © Top Notch Teaching

oo
shooting

Copyright © Top Notch Teaching

oo
snooker

Copyright © Top Notch Teaching

oo
spooky

Copyright © Top Notch Teaching

oo
zooming

Copyright © Top Notch Teaching

Word Cards - Multisyllabic Words
Phoneme: m/oo/n - Spelling: ew

ew

brewed

Copyright © Top Notch Teaching

ew

brewing

Copyright © Top Notch Teaching

ew

cashew

Copyright © Top Notch Teaching

ew

chewed

Copyright © Top Notch Teaching

ew

chewing

Copyright © Top Notch Teaching

ew

Lewis

Copyright © Top Notch Teaching

ew

outgrew

Copyright © Top Notch Teaching

ew

screwdriver

Copyright © Top Notch Teaching

ew

unscrew

Copyright © Top Notch Teaching